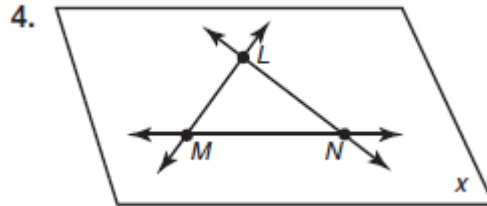
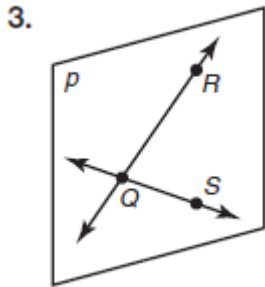
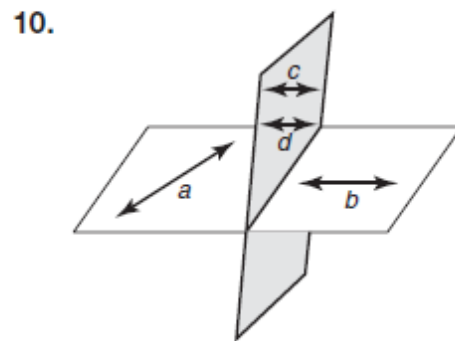
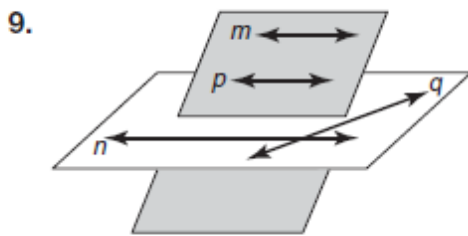


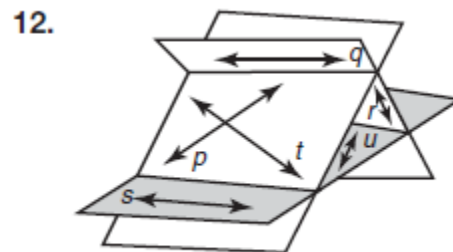
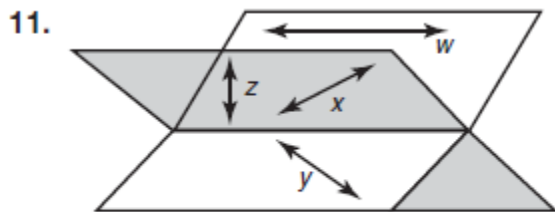
Identify the point(s), line(s), and plane(s) in each figure.



Identify all examples of coplanar lines in each figure.

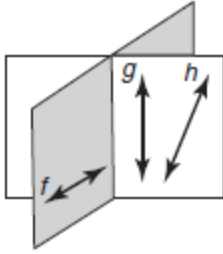


Lines  $m$  and  $p$  are coplanar.  
 Lines  $n$  and  $q$  are coplanar.



Identify all skew lines in each figure.

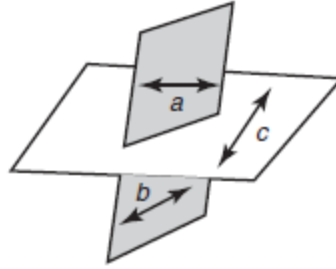
13.



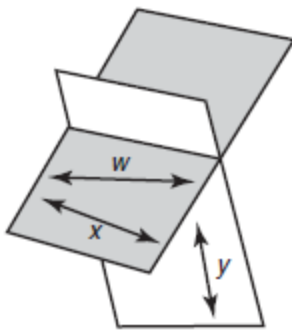
Lines  $f$  and  $g$  are skew.

Lines  $f$  and  $h$  are skew.

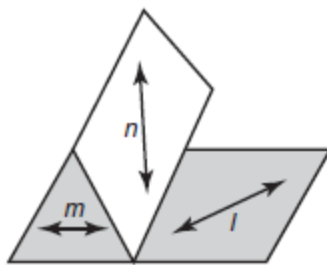
14.



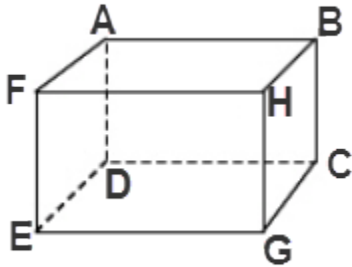
15.



16.



17.



a. Name the front plane.

b. Name 2 coplanar lines.

c. Name 2 skew lines.

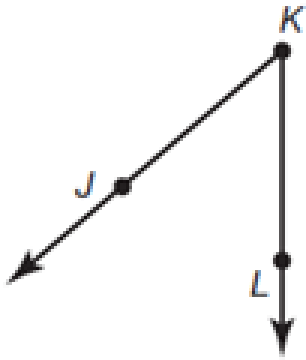
d. Name 3 planes that contain point D.

e. Name 2 planes that contain points C and G.

f. Name the intersection of plane HBC and plane ADG.

## Constructions

1. Construct and label a copy of the angle. Write a congruency and an equality statement about the angles.



2. Construct and label the bisector of the angle. Write a congruency or equality statement about the angles.

